

ROTARY CLUB SCULPTURE

MISSISSIPPI RIVERFRONT

- Funded by privately raised Rotary Club of Baton Rouge donations.
- Donated to the City-Parish in celebration of the Rotary Club of Baton Rouge 100 Year Anniversary.
- Installed on the Florida Riverfront Access Point at Florida Street and River Road.
- 14' tall stainless steel construction.
- Interactive design that engages visitors and reflects the flow of the Mississippi River.
- Emits a singing sound when visitors approach the sculpture.
- Highly reflective exterior showcasing the urban surroundings and visitors.

Design and Construction Team

Donor: Rotary Club of Baton Rouge

Artist / Sculptor: Po Shu Wang

Architect: Skipper Post, Post Architects

EBR City-Parish: Public Works, Department of Transportation & Drainage

Project Oversight: Downtown Development District

Structural Engineer: Ragland Aderman & Associates, Inc.

Contractor: Boh Bros Construction Co. & Turner Industries

Rotary Centennial Chairman: Beau Olinde

Overview

In celebration of the 100-Year Anniversary of the Rotary Club of Baton Rouge, a service association comprised of area business and professional leaders, is donating a unique spherical sculpture to East Baton Rouge City-Parish. The sculpture is installed on the Mississippi Riverfront at the terminus of Florida Street, and offers a unique landmark for visitors and citizens to enjoy.

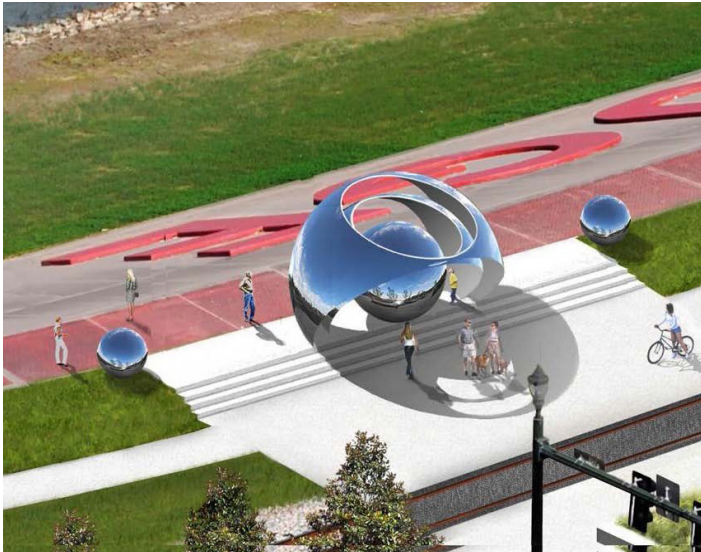
The Rotary Club of Baton Rouge raised private funds to hire world renowned artist Po Shu Wang to design and build the sculpture. The sculpture's largest sphere stands 14 feet tall, and is visible from the Mississippi River Bridge and locations throughout downtown. In addition, the sculpture was designed to be interactive with visitors and the flow of the mighty Mississippi River. A sensor is located in the river measuring the speed of the river, then converting the data frequencies to a singing sound that visitors are able to influence.



Sculpture Completed on Mississippi Riverfront

ROTARY CLUB SCULPTURE

MISSISSIPPI RIVERFRONT



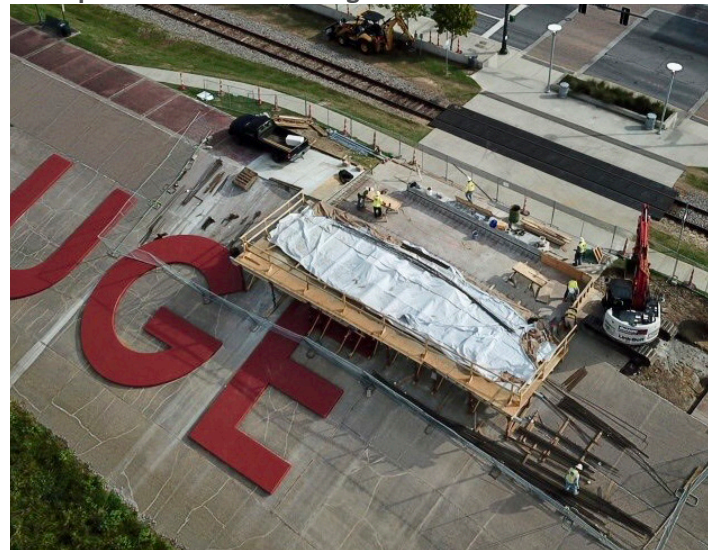
Conceptual Bird's Eye Rendering



Conceptual Elevation Rendering



Fabricated Sculpture



Sculpture Platform Construction



Sculpture Installed

Rotary
Club of Baton Rouge



**DOWNTOWN
DEVELOPMENT
DISTRICT**